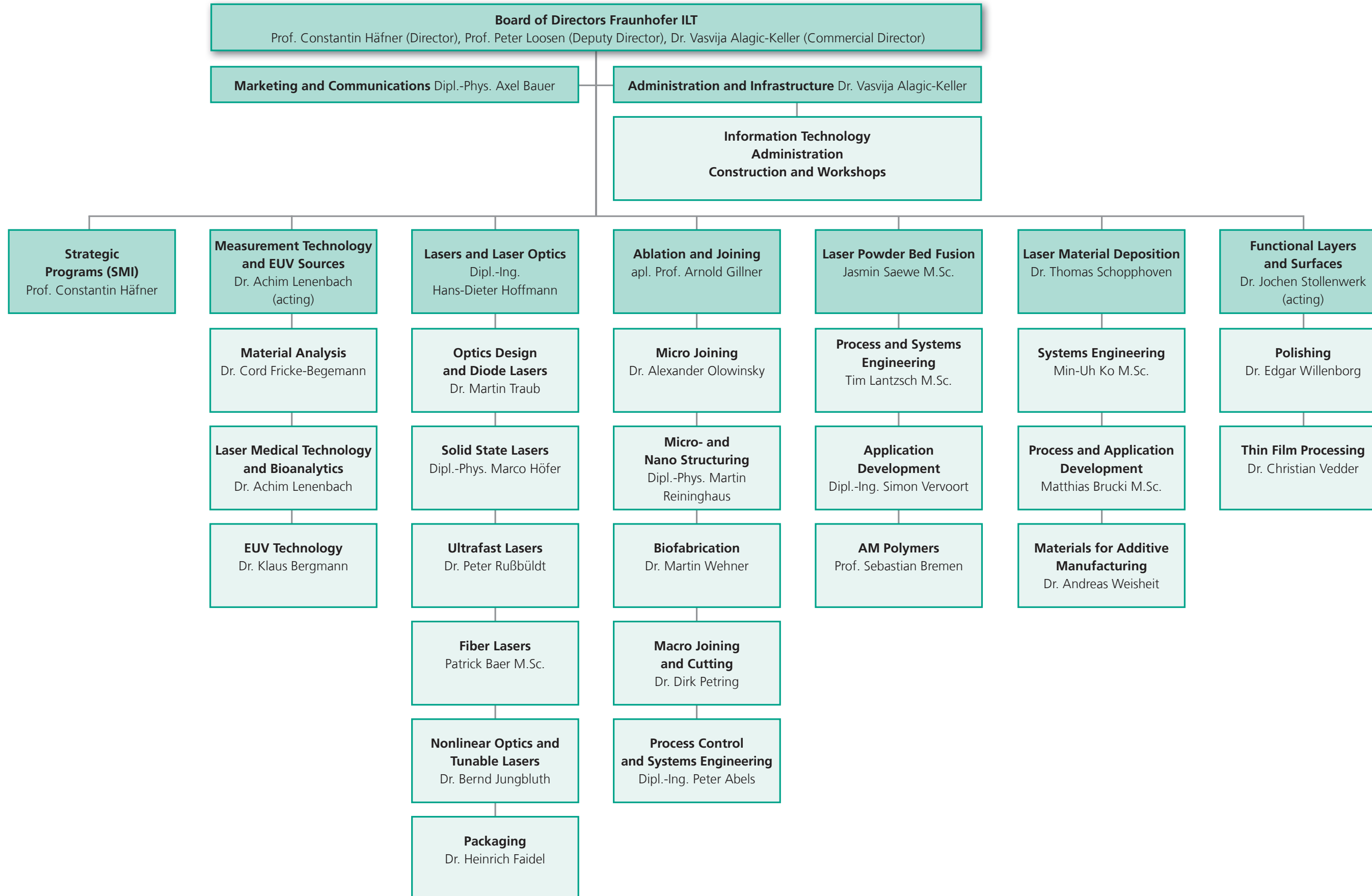


Organisation Chart – Fraunhofer Institute for Laser Technology ILT



**Cooperating Chairs
of RWTH Aachen University**

Chair for Laser Technology LLT
Prof. Constantin Häfner
(www.llt.rwth-aachen.de)

- apl. Prof. Reinhard Noll
- apl. Prof. Arnold Gillner
- Chair for Nonlinear Dynamics of Laser Processing NLD (Prof. Wolfgang Schulz)

Chair for Technology of Optical Systems TOS
Prof. Carlo Holly
(www.tos.rwth-aachen.de)